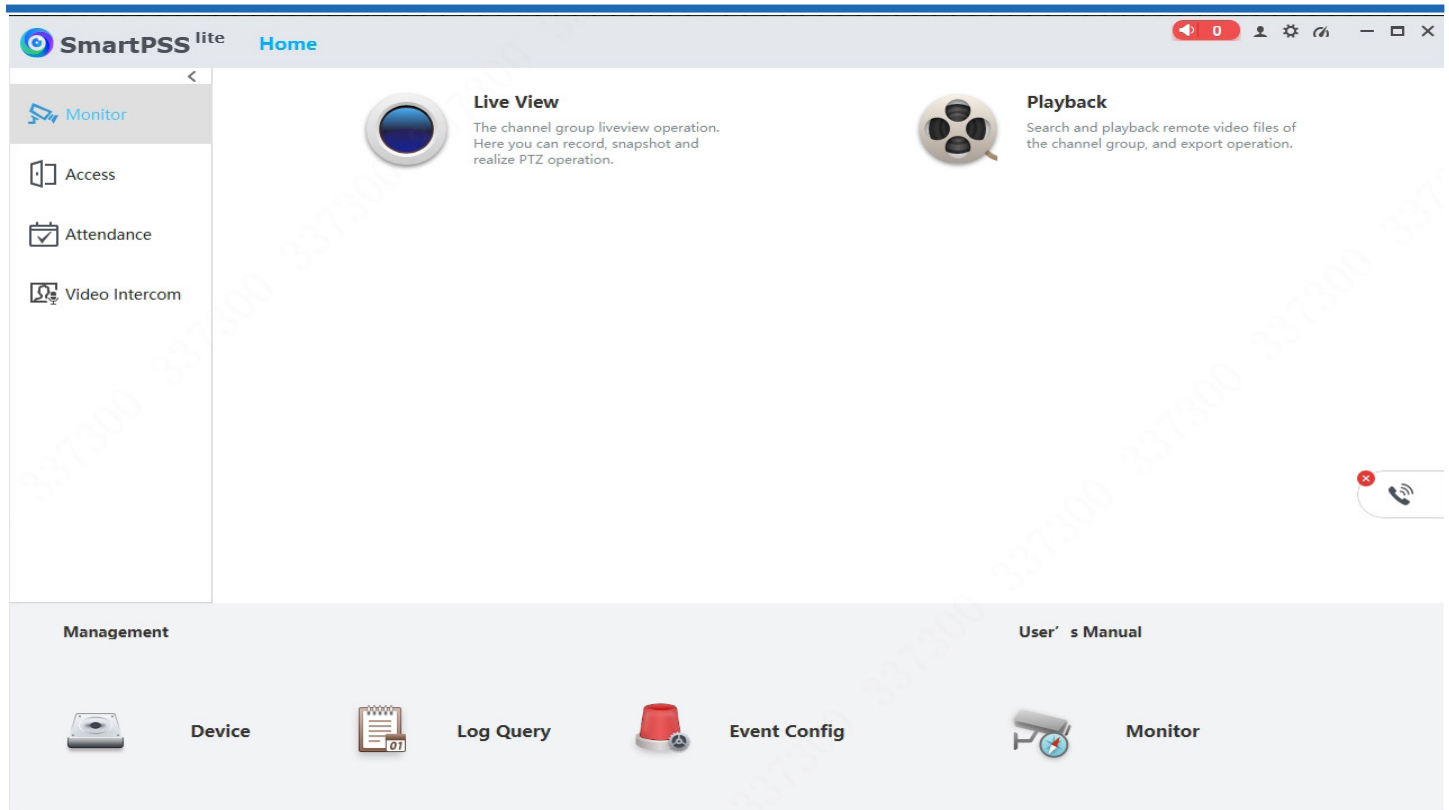


SmartPSS Lite

SmartPSS Lite

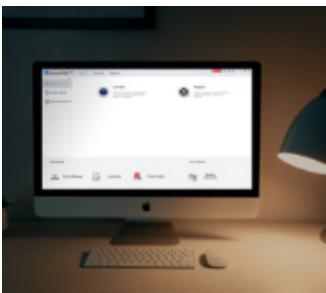




■ Introduction

The SmartPSS Lite Client Software is designed to configure and manage Dahua devices such as IP cameras, recorders (NVRs, XVRs), access control devices (ASIs, ASCs, ASGs, ASRs), attendance management devices (ASAs), and video intercom devices (VTOs, VTHs, VTSs). It provides multiple functionalities, including live view, smart search and playback, receiving of multiple events and alarms, unified personnel management, multi-period attendance, video intercom, first card unlock, multi-card unlock, anti-passback and inter-door lock.

■ Features

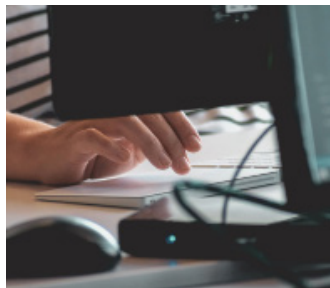


Video

Supports customizing and controlling how to view videos in real time such as by giving priority to important areas via placing them in larger windows. Different devices can also be remotely controlled to perform various actions such as talking to people through the camera. Also, if an emergency occurs, manual recording is just a click away to quickly save that particular part of the video for evidence.

Access Control

The integrated access control system supports controlling access within any area directly from SmartPSS Lite by utilizing the access control devices on the client. Through it, doors can be remotely unlocked, the area around doors can be monitored, advanced authentication rules can be set to protect classified areas, and much more. To stay up to date, the system also keeps complete records of all access control activities.





Attendance

SmartPSS Lite is a one-stop solution for keeping track of the working hours of employees and managing absence and leave. In the newly released version, it supports cross-day attendance function. Detailed reports can be generated for the appraisal of employees and calculation of wages.



Video Intercom

All video intercom devices can be managed directly through one easy-to-use interface that offers two-way communication and remote access control. Multiple operations are supported by the interface, such as securing access to the premises and directly receiving calls and emergency reports from people on-site. Building management is also convenient, as group notices can be sent to all the indoor monitors to keep people informed of important events such as scheduled power outages.



Event

Multiple alarms can be monitored and processed directly from the event configuration page, while statistics are being continuously generated. The interface supports various predefined alarm types, manually taking snapshots, and sending emails for important events.

System Requirements

CPU	Intel Core i5-6500@3.20GHz
Memory	8 GB
HDD	256 GB
Operating System	Microsoft® Windows 7 (64-bit) Microsoft® Windows 8 (64-bit) Microsoft® Windows 10 (64-bit) Microsoft® Windows 11 (64-bit)
Resolution	1280 × 800 and above

* The parameters above are recommended values for smooth operation of the software.

Specification

Item	
Language	English, European Spanish, Latin American Spanish, French, Italian, European Portuguese, Brazilian Portuguese, Russian, Thai, Turkish, Korean, Traditional Chinese, Japanese, Arabic, Hungarian, Indonesian, Polish, Hebrew, Czech, Slovak, Ukrainian, Vietnamese, German, Malay, Bulgarian
Time attendance and doors	64
Persons	1000
Cards	5000
Fingerprints	3000
Face pictures	2000
Device Type	Network camera (including fixed-focal, vari-focal and Fisheye), PTZ camera and Thermal camera Network Recorder(NVR), HDCVI Recorder (XVR), Turnstile (ASG) Access Standalone(ASI), Access Controller(ASC), Access Reader(ASR), Fingerprint Enrollment Reader(ASM), Time & Attendance Terminal(ASA) Apartment door station and villa door station (VTO), Indoor Monitor (VTH), Master Station (VTS)

Video	
Video Channels	64
Resolution	8 MP, 4 MP, 3 MP, 1080p, 720p, D1
Decoding Capability	64-channel D1(720 × 576)(CPU: Intel Core i5-6500@3.20GHz, Memory: 8 GB)
Multi-channel Live View	Arbitrary split, up to 64-channel preview
Multi-channel Playback	32-channel D1 (720 × 576)(CPU: Intel Core i5-6500@3.20GHz, Memory: 8 GB)
Recording Mode	General record, alarm record, motion detection record, intelligent record
Access Control	
Area	40
Holiday Template	128
Permission Rule	128
Weekly Plan	128
Max Time Period of One Day	4
Holiday	128
Anti-passback Group List	64
Global Anti-passback Group List	16
First Card Unlock Record	64
Multi Card Unlock Record	64
Inter-door Lock Record	64
Real-time Event Display	100
Attendance Management	
Report Type	19
Attendance Period	32
Attendance Shift	32
Shift Schedule	32
Holiday	32
Rest Periods in a Single Attendance Period	7
Video Intercom	
VTO/VTH/VTS	512
Event	
Intelligent Event	Tripwire, Intrusion, Scene Change, Abandoned Object, Missing Object, Wander, Crowd Gathering Estimation, Fast-Moving, Illegal Parking, Face Detection
Device Event	No Disk, Disk Fault, Disk Full, Invalid Access, Device Offline, Voltage Alarm(Low)
Alarm Event	Video Loss, Video Tampering, Motion Detect, SMD, Audio Abnormal, Mutation Detection, Defocus Detection, IPC Offline Intrusion Alarm, Door Unclosed Alarm, Duress Alarm, Blocklist Alarm, Trailing Alarm, Stay Alarm Vandal-proof Alarm, Door Sensor Alarm, Heat Alarm, Duress Password Unlock Alarm, Infrared, Gas, Smoke Sensor, Urgency Button, Stolen Alarm, Perimeter Alarm